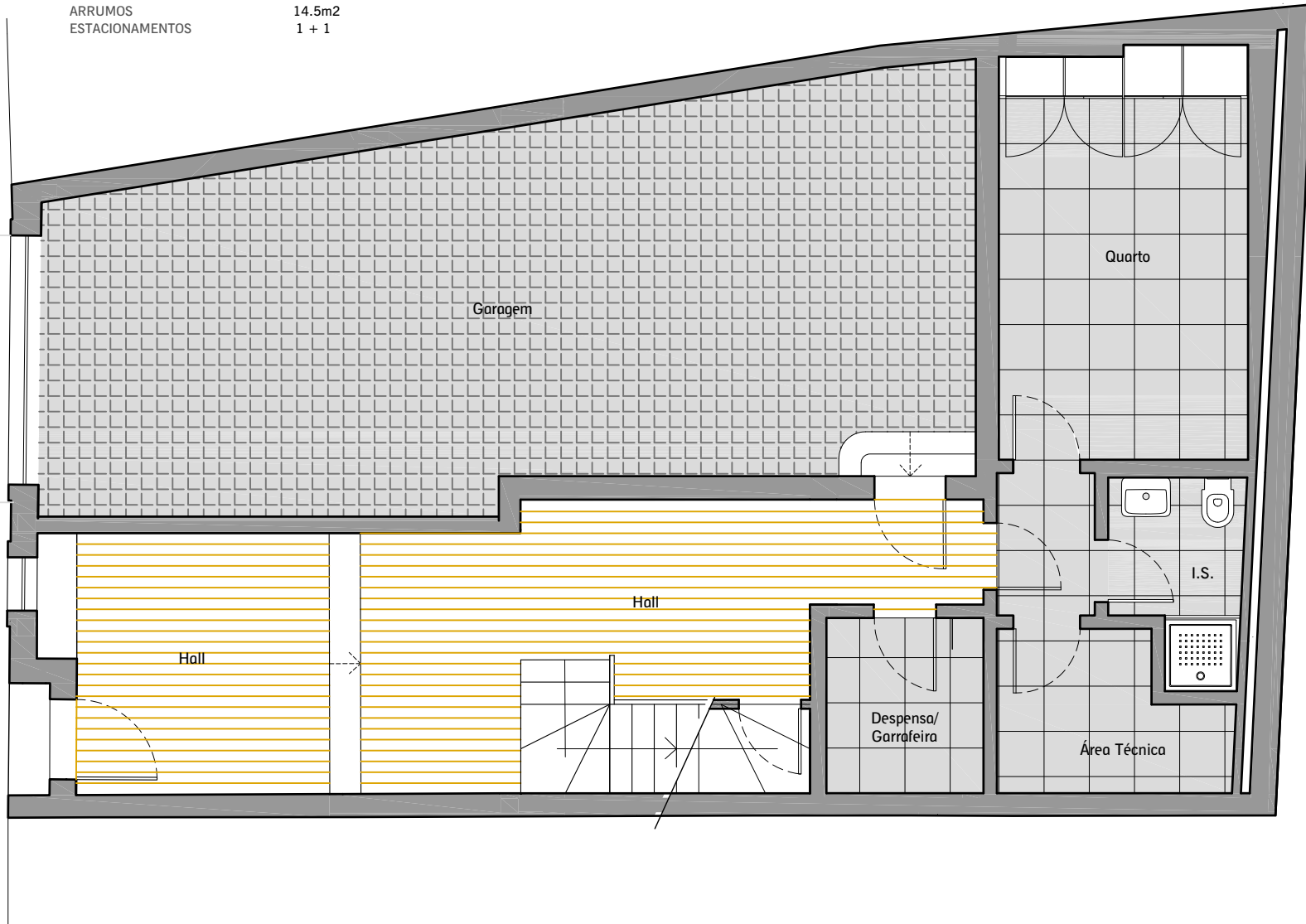
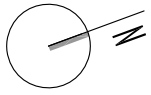


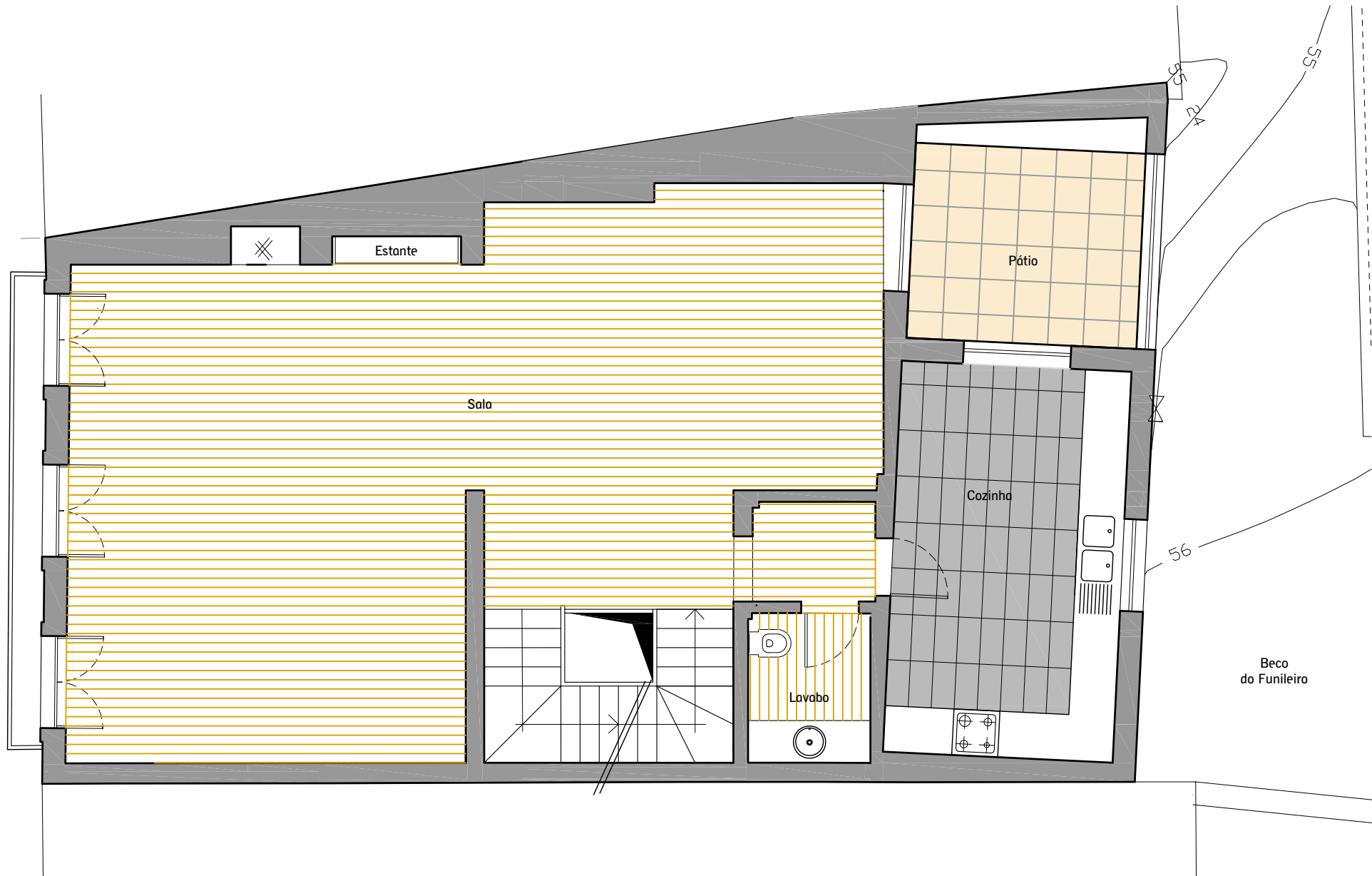
ÁREA BRUTA DE CONSTRUÇÃO	377.0m <sup>2</sup>
PÁTIO	67.35m <sup>2</sup>
TERRAÇO	11.2m <sup>2</sup>
VARRANDAS	4.0m <sup>2</sup>
ARRUMOS	14.5m <sup>2</sup>
ESTACIONAMENTOS	1 + 1

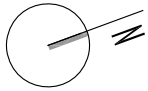
Rua das  
Necessidades



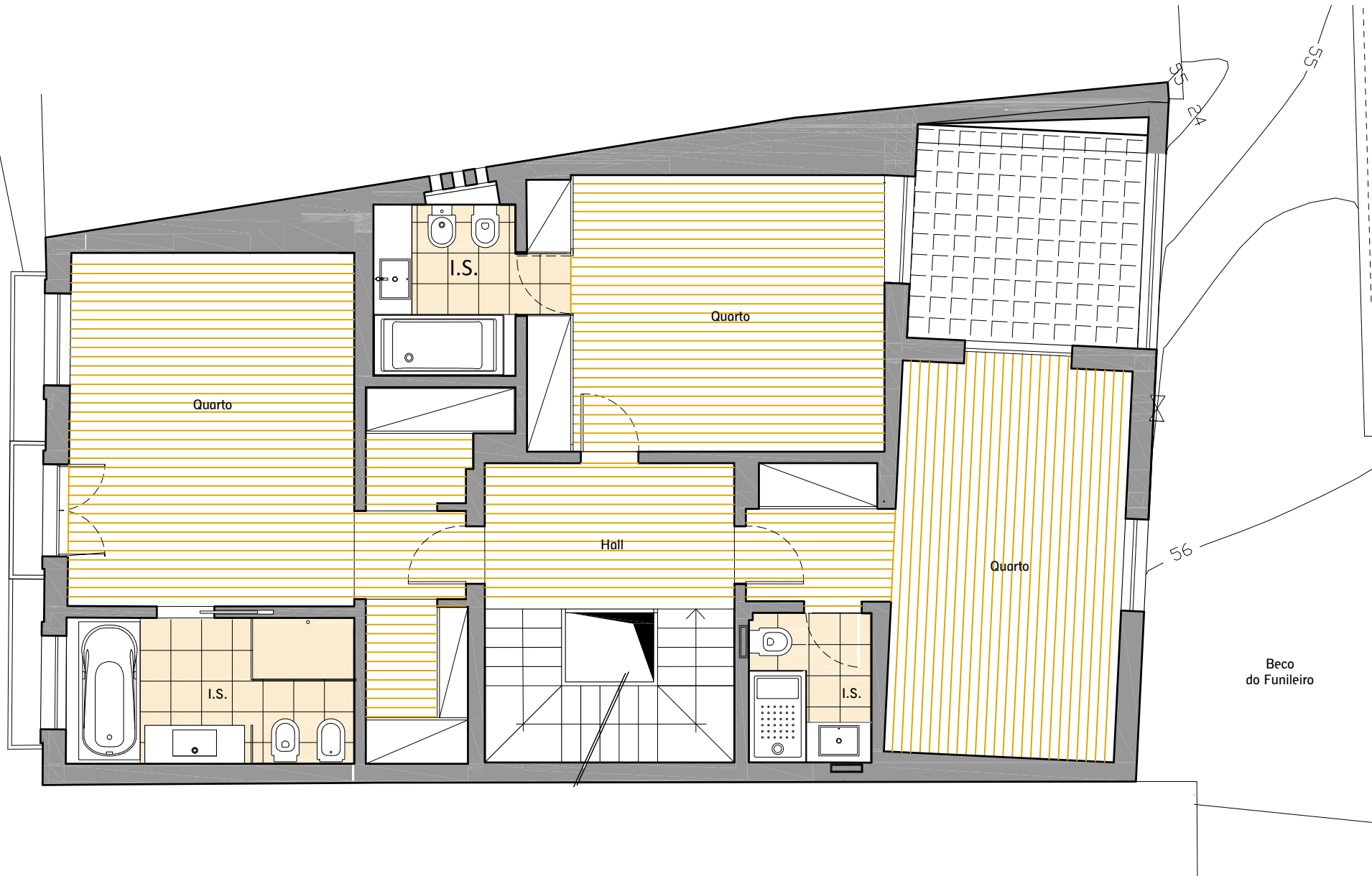


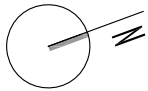
Rua das  
Necessidades



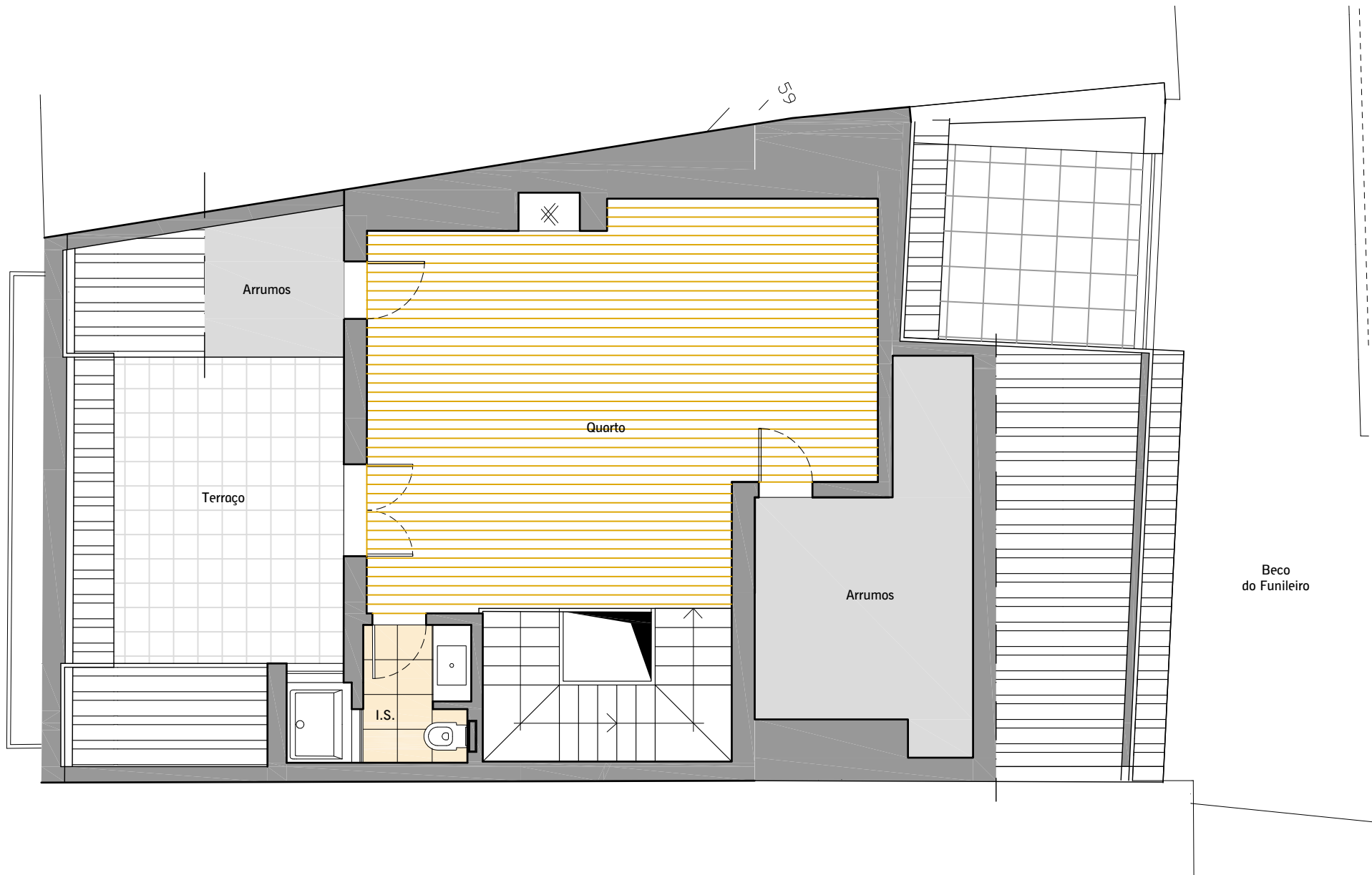


Rua das  
Necessidades





Rua das  
Necessidades



Beco  
do Funileiro